


**SCAN**  
 "Creating Stronger Communities by Empowering People"

**Humberto Pena Jr.**  
 M.A. LPC, LCDC

**SCAN**  
 "Creating Stronger Communities by Empowering People"

1

---

---

---

---

---

---

---

---

**SCAN at glance**

- A non-profit organization dedicated to our communities
- Founded in 1982 in Laredo, Texas
- Today we serve 17 counties in South Texas
- We have over 40 programs dedicated to providing diverse services:
  - Treatment
  - Prevention
  - Intervention
  - Recovery Support Services




**SCAN**  
 "Creating Stronger Communities by Empowering People"

2

---

---

---

---

---

---

---

---

**Joint Commission Accredited**

- We recently were re-accredited with our Joint commission accreditation.
- Essentially the Joint commission has helped SCAN develop a standard across all our clinics with safe and high-quality care.



**SCAN**  
 "Creating Stronger Communities by Empowering People"

3

---

---

---

---

---

---

---

---



4

---

---

---

---

---

---

---

---



5

---

---

---

---

---

---

---

---



6

---

---

---

---

---

---

---

---



7

---

---

---

---

---

---

---

---



8

---

---

---

---

---

---

---

---



9

---

---

---

---

---

---

---

---



10

---

---

---

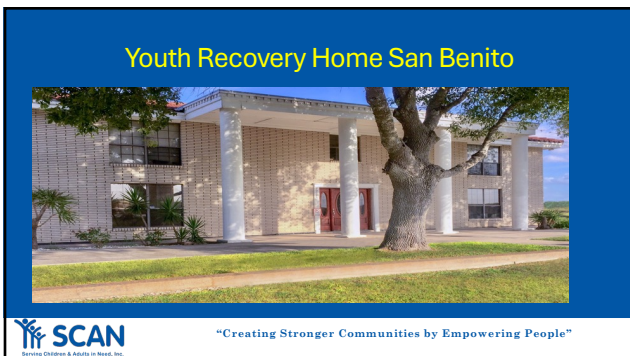
---

---

---

---

---



11

---

---

---

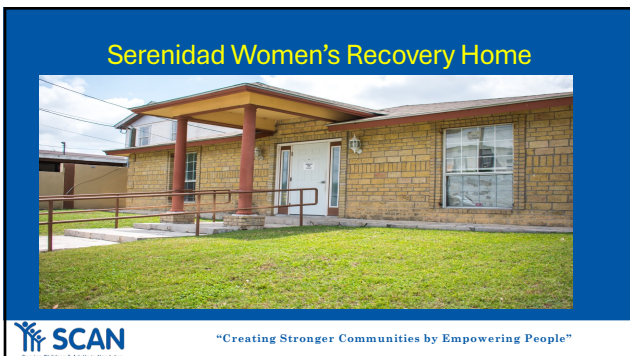
---

---

---

---

---



12

---

---

---

---

---

---

---

---

Serenidad Women's Recovery Home



SCAN  
Serving Children & Adults in Need, Inc.

"Creating Stronger Communities by Empowering People"

13

---

---

---

---

---

---

---

---

Serenidad Women's Recovery Home



SCAN  
Serving Children & Adults in Need, Inc.

"Creating Stronger Communities by Empowering People"

14

---

---

---

---

---

---

---

---

Serving Children and Adults in Need

[WWW.SCAN-INC.ORG](http://WWW.SCAN-INC.ORG)

Administration Phone: 956-724-5111  
Main Office: 956-724-3177  
Fax: 956-724-4861  
Follow us on social media:



SCAN  
Serving Children & Adults in Need, Inc.

"Creating Stronger Communities by Empowering People"

15

---

---

---

---

---

---

---

---